

PRODUCT DESCRIPTION

Flanged recessed fixture housing, constructed of extruded aluminum profiles, providing a crisp and true finished ceiling opening. Fixture houses a series of independently adjustable lamp assemblies for downlighting and accent lighting applications. Designed and engineered lampholder assemblies are die cast and machined for precision and appearance. Finite adjustments with position locking allows the assemblies to tilt up to 45 degrees and rotate 359 degrees.

ELECTRICAL

Electrical wiring is easily accessible through removable access doors located in the side of the housing. Fixture is supplied only with electronic power supplies, easily removable through access door. UL Listed as "suitable for use with thru branch wiring." Thermal protector is located in the power supply compartment to protect against overheating and easily accessible through access door located in housing.

LAMPS

T6, G12 Base, CMH Lamps, 39 or 70W.

SERVICING AND ADJUSTMENTS

All components are easily accessible and removable from below. Two-piece lamp and lens holder assembly incorporates our acutread design, eliminating freezing of the screw threads and allowing ease of relamping.

INSTALLATION

Housing to be supported by threaded rods. Sheet rock ceiling aperture shall be overlapped with fixture trim flange.

LABELS

cULus Listed for non-type IC applications.
" Suitable for use in damp locations. "

LYTEPOD SERIES

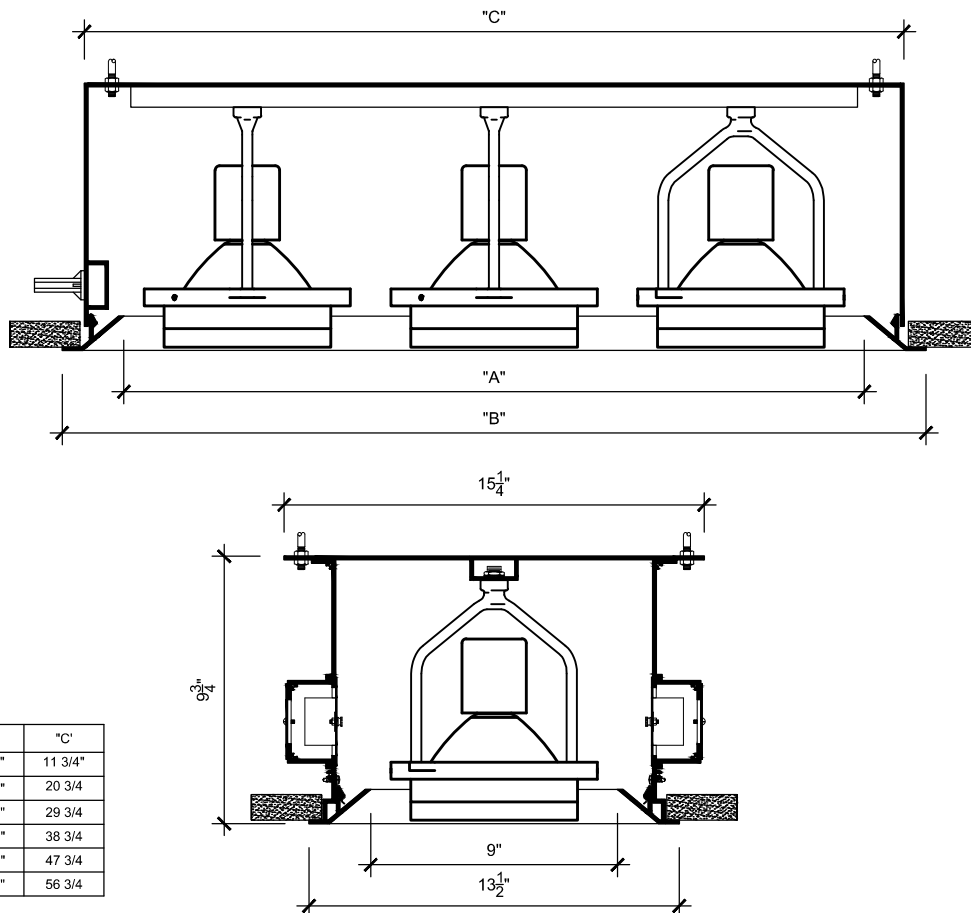
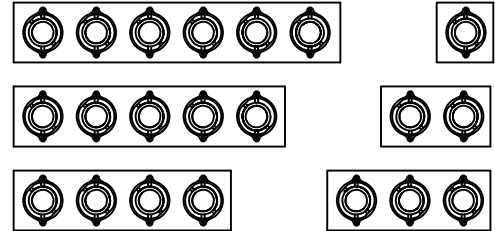
RECESSED FLANGED

T6 CMH

PROJECT: _____

FIXTURE TYPE: _____

CATALOG NUMBER: _____



	"A"	"B"	"C"
1T6 CMH	9"	13 1/2"	11 3/4"
2T6 CMH	18"	22 1/2"	20 3/4"
3T6 CMH	27"	31 1/2"	29 3/4"
4T6 CMH	36"	40 1/2"	38 3/4"
5T6 CMH	45"	49 1/2"	47 3/4"
6T6 CMH	54"	58 1/2"	56 3/4"

FIXTURE ORDERING INFORMATION:

