

**PRODUCT DESCRIPTION**

Flanged recessed fixture housing, constructed of extruded aluminum profiles, providing a crisp and true finished ceiling opening. Fixture houses a series of independently adjustable lamp assemblies for downlighting and accent lighting applications. Designed and engineered lampholder assemblies are die cast and machined for precision and appearance. Finite adjustments with position locking allows the assemblies to tilt up to 45 degrees and rotate 359 degrees.

**ELECTRICAL**

Electrical wiring is easily accessible through removable access doors located in the side of the housing. Fixture is supplied only with electronic power supplies, easily removable through access door. UL Listed as "suitable for use with thru branch wiring." Thermal protector is located in the power supply compartment to protect against overheating and easily accessible through access door located in housing.

**LAMPS**

PAR38 CMH Lamps. 70 Watts or 100 Watts.

**SERVICING AND ADJUSTMENTS**

All components are easily accessible and removable from below. Two-piece lamp and lens holder assembly incorporates our acuthread design, eliminating freezing of the screw threads and allowing ease of relamping.

**INSTALLATION**

Butterfly brackets at each end accept 1/2" EMT, C channel, and T bar fasteners. Housing can also be supported by threaded rods.

**LABELS**

cULus Listed for non-type IC applications. " Suitable for use in damp locations. "

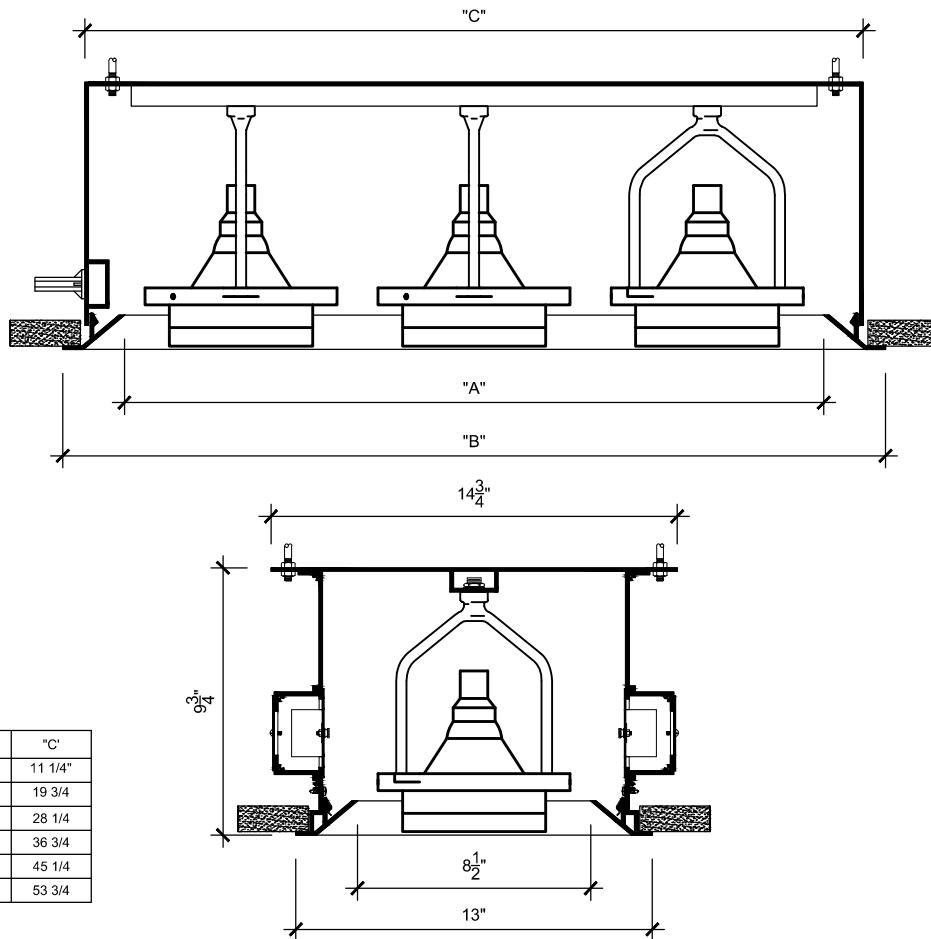
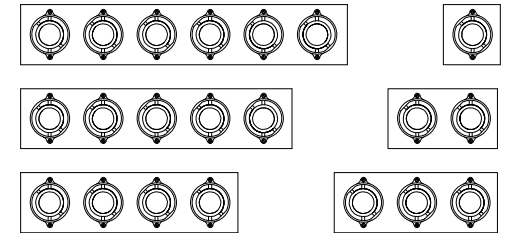
**LYTEPOD SERIES**

RECESSED FLANGED PAR38 CMH

PROJECT: \_\_\_\_\_

FIXTURE TYPE: \_\_\_\_\_

CATALOG NUMBER: \_\_\_\_\_



|            | "A"     | "B"     | "C"     |
|------------|---------|---------|---------|
| 1PAR38 CMH | 8 1/2"  | 13"     | 11 1/4" |
| 2PAR38 CMH | 17"     | 21 1/2" | 19 3/4" |
| 3PAR38 CMH | 25 1/2" | 30"     | 28 1/4" |
| 4PAR38 CMH | 34"     | 38 1/2" | 36 3/4" |
| 5PAR38 CMH | 42 1/2" | 47"     | 45 1/4" |
| 6PAR38 CMH | 51"     | 55 1/2" | 53 3/4" |

**FIXTURE ORDERING INFORMATION:**

